

## UP-ST350-2



Specification		
Nominal Voltage	2V	
Nominal Capacity (10HR)	350.0AH	
Dimension	Length	170±2mm (6.69 inches)
	Width	150±2mm (5.91 inches)
	Container Height	328±3mm (12.91 inches)
	Total Height (with Terminal)	350±3mm (13.78 inches)
	Approx Weight	Approx 19.0kg (41.9lbs)
Terminal	T11	
Container Material	ABS	
Rated Capacity	368.0AH/18.4A	(20hr, 1.80V/cell, 25°C/77°F)
	350.0AH/35.0A	(10hr, 1.80V/cell, 25°C/77°F)
	304.5AH/60.9A	(5hr, 1.75V/cell, 25°C/77°F)
	264.6AH/88.2A	(3hr, 1.75V/cell, 25°C/77°F)
	212.5AH/212.5A	(1hr, 1.60V/cell, 25°C/77°F)
Max. Discharge Current	2800A (5s)	
Internal Resistance	Approx 0.8mΩ	
Operating Temperature Range	Discharge: -15~50°C (5~122°F)	
	Charge : 0~40°C (32~104°F)	
	Storage : -15~40°C (5~104°F)	
Nominal Operating Temperature Range	25±3°C (77±5°F)	
Cycle Use	Initial Charging Current less than 105.0A.Voltage. 2.4V~2.5.0V at 25°C (77°F) Temp. Coefficient -5mV/°C	
Standby Use	No limit on Initial Charging Current Voltage. 2.25V~2.3V at 25°C (77°F) Temp. Coefficient -3mV/°C	
Capacity affected by Temperature	40°C (104°F) 103%	
	25°C (77°F) 100%	
	0°C (32°F) 86%	
Self Discharge	Batteries may be stored for up to 6 months at 25°C (77°F) and then a freshening charge is required.	

Constant Current Discharge (Amperes) at 25°C (77°F)													
F.V/Time	15min	20min	30min	45min	1h	2h	3h	4h	5h	6h	8h	10h	20h
1.85V/cell	360.5	324.5	268.4	212.8	174.7	104.9	81.1	66.6	56.7	49.5	39.9	33.4	17.7
1.80V/cell	409.5	361.2	288.0	223.9	185.5	110.7	85.1	69.6	59.1	51.7	41.4	35.0	18.4
1.75V/cell	449.9	389.3	304.9	235.4	193.6	115.3	88.2	71.9	60.9	53.0	42.2	35.4	18.6
1.70V/cell	/	416.4	320.0	244.3	200.3	118.7	90.5	73.5	62.0	53.9	42.9	35.7	18.7
1.65V/cell	/	436.9	335.6	254.9	207.6	122.2	92.5	75.1	63.3	54.8	43.5	36.2	19.0
1.60V/cell	/	453.1	347.2	261.8	212.5	125.1	94.5	76.1	64.2	55.6	44.1	36.6	19.2

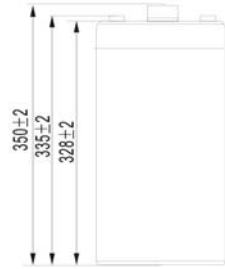
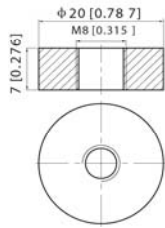
Constant Power Discharge (Watts) at 25°C (77°F)													
F.V/Time	15min	20min	30min	45min	1h	2h	3h	4h	5h	6h	8h	10h	20h
1.85V/cell	682.6	617.1	512.9	409.2	337.8	204.1	158.5	130.6	111.7	97.9	79.2	66.5	35.3
1.80V/cell	765.4	679.8	545.9	427.6	356.8	214.2	165.4	136.0	115.9	101.8	82.0	69.5	36.5
1.75V/cell	829.0	724.4	573.7	447.0	370.6	222.2	171.1	140.1	119.0	103.9	83.3	70.1	36.9
1.70V/cell	/	768.0	596.9	460.6	381.6	227.8	175.0	142.6	120.7	105.6	84.5	70.8	37.2
1.65V/cell	/	797.3	621.5	478.0	393.1	233.7	178.0	145.2	122.9	107.1	85.5	71.6	37.6
1.60V/cell	/	817.5	636.4	486.3	399.6	237.7	180.9	146.5	124.2	108.2	86.5	72.3	38.0



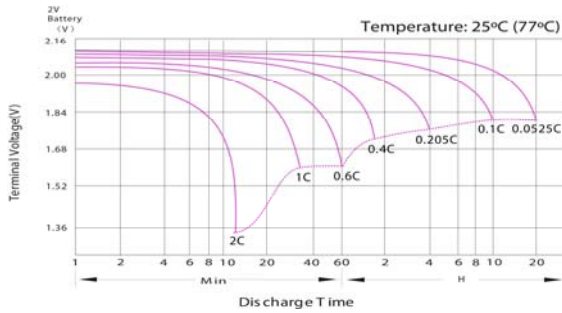
**UP-ST350-2**

**Dimensions**

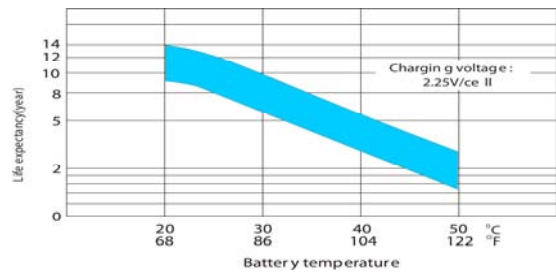
**T11 Terminal**  
Unit: mm [inches]



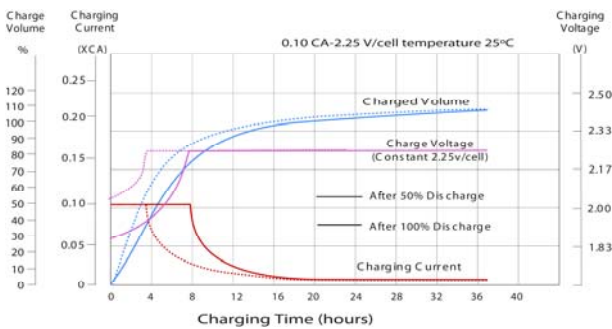
**Discharge Characteristics**



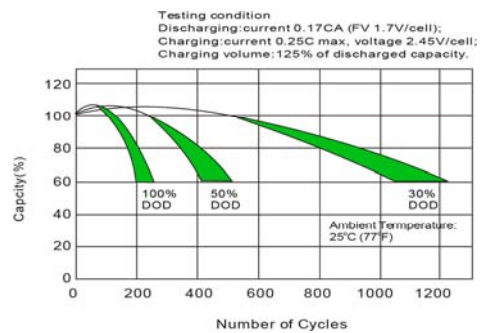
**Effect of Temperature on Long Term Float Life**



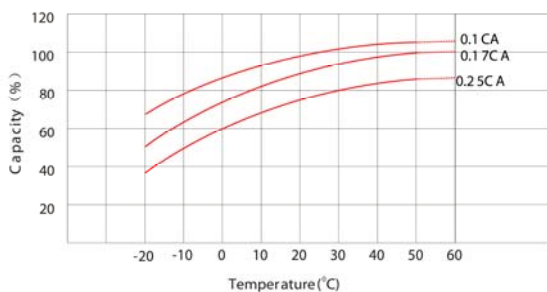
**Float Charging Characteristics**



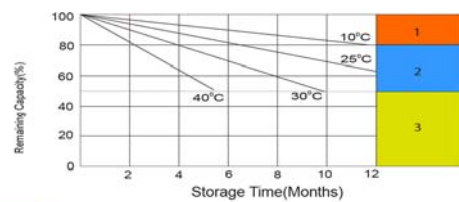
**Cycle Life in Relation to Depth of Discharge**



**Temperature Effects in Relation to Battery Capacity**



**Self Discharge Characteristics**



- 1 No supplementary charge required (Carry out supplementary charge before use if 100% capacity is required)
- 2 Supplementary charge required before use. Optional charging way as below:  
1. Charged for above 3 days at limited current 0.25CA and constant voltage 2.25V/cell.  
2. Charged for above 20 hours at limited current 0.25CA and constant voltage 2.45V/cell.  
3. Charged for 8-10 hours at limited current 0.05CA.
- 3 Supplementary charge may often fail to recover the capacity. The battery should never be left standing till this is reached.

