

UP-ST250-2



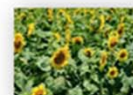
Specification		
Nominal Voltage	2V	
Nominal Capacity (10HR)	250.0AH	
Dimension	Length	170±2mm (6.69 inches)
	Width	110±2mm (4.33 inches)
	Container Height	328±3mm (12.91 inches)
	Total Height (with Terminal)	350±3mm (13.78 inches)
Approx Weight	Approx 14.0kg (30.9lbs)	
Terminal	T11	
Container Material	ABS	
Rated Capacity	262.0AH/13.1A	(20hr, 1.80V/cell, 25°C/77°F)
	250.0AH/25.0A	(10hr, 1.80V/cell, 25°C/77°F)
	217.5AH/43.5A	(5hr, 1.75V/cell, 25°C/77°F)
	189.0AH/63.0A	(3hr, 1.75V/cell, 25°C/77°F)
	151.8AH/151.8A	(1hr, 1.60V/cell, 25°C/77°F)
Max. Discharge Current	2000A (5s)	
Internal Resistance	Approx 1.0mΩ	
Operating Temperature Range	Discharge: -15~50°C (5~122°F)	
	Charge : 0~40°C (32~104°F)	
	Storage : -15~40°C (5~104°F)	
Nominal Operating Temperature Range	25±3°C (77±5°F)	
Cycle Use	Initial Charging Current less than 75.0A.Voltage. 2.4V~2.5.0V at 25°C (77°F) Temp. Coefficient -5mV/°C	
Standby Use	No limit on Initial Charging Current Voltage. 2.25V~2.3V at 25°C (77°F) Temp. Coefficient -3mV/°C	
Capacity affected by Temperature	40°C (104°F) 103%	
	25°C (77°F) 100%	
	0°C (32°F) 86%	
Self Discharge	Batteries may be stored for up to 6 months at 25°C (77°F) and then a freshening charge is required.	

Constant Current Discharge (Amperes) at 25°C (77°F)

F.V/Time	15min	20min	30min	45min	1h	2h	3h	4h	5h	6h	8h	10h	20h
1.85V/cell	257.5	231.8	191.7	152.0	124.8	74.9	57.9	47.6	40.5	35.4	28.5	23.9	12.7
1.80V/cell	292.5	258.0	205.7	159.9	132.5	79.1	60.8	49.7	42.2	37.0	29.6	25.0	13.1
1.75V/cell	321.4	278.1	217.8	168.2	138.3	82.3	63.0	51.4	43.5	37.8	30.2	25.3	13.3
1.70V/cell	343.0	297.4	228.5	174.5	143.1	84.8	64.7	52.5	44.3	38.5	30.6	25.5	13.4
1.65V/cell	361.5	312.1	239.7	182.1	148.3	87.3	66.1	53.6	45.2	39.2	31.1	25.8	13.6
1.60V/cell	379.0	323.7	248.0	187.0	151.8	89.4	67.5	54.4	45.9	39.7	31.5	26.1	13.7

Constant Power Discharge (Watts) at 25°C (77°F)

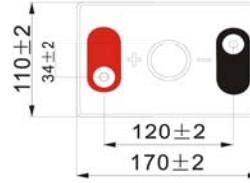
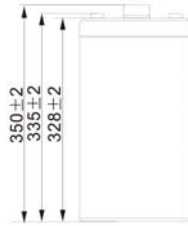
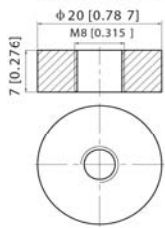
F.V/Time	15min	20min	30min	45min	1h	2h	3h	4h	5h	6h	8h	10h	20h
1.85V/cell	487.6	440.8	366.4	292.3	241.3	145.8	113.2	93.3	79.8	69.9	56.6	47.5	25.2
1.80V/cell	546.7	485.6	389.9	305.4	254.9	153.0	118.2	97.1	82.8	72.7	58.6	49.6	26.1
1.75V/cell	592.1	517.4	409.8	319.3	264.7	158.7	122.2	100.1	85.0	74.2	59.5	50.1	26.3
1.70V/cell	625.5	548.6	426.4	329.0	272.6	162.7	125.0	101.9	86.2	75.4	60.4	50.5	26.6
1.65V/cell	651.1	569.5	443.9	341.4	280.8	166.9	127.2	103.7	87.8	76.5	61.1	51.1	26.9
1.60V/cell	671.4	583.9	454.6	347.4	285.4	169.8	129.2	104.7	88.7	77.3	61.8	51.6	27.1



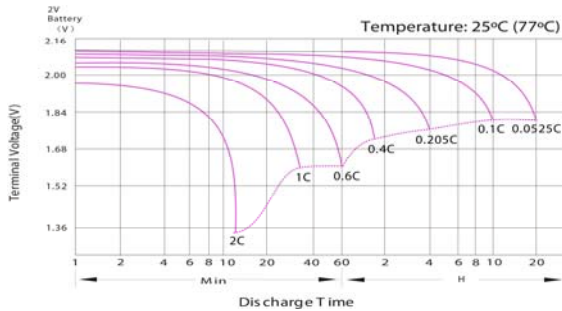
UP-ST250-2

Dimensions

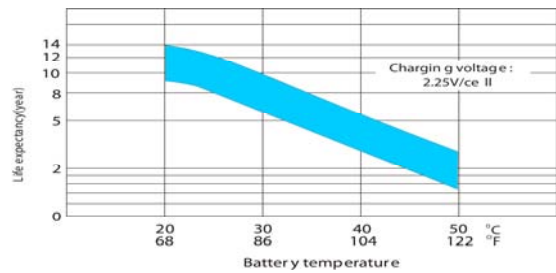
T11 Terminal
Unit: mm [inches]



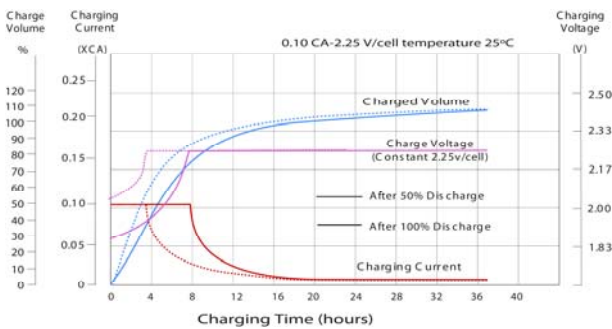
Discharge Characteristics



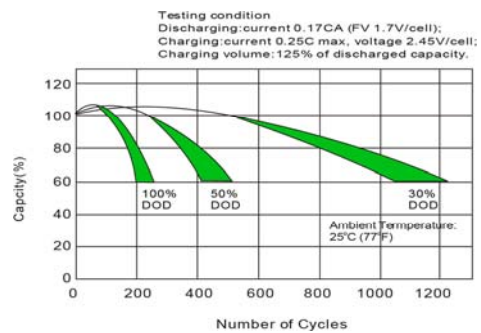
Effect of Temperature on Long Term Float Life



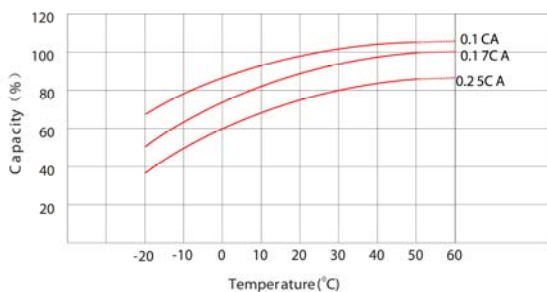
Float Charging Characteristics



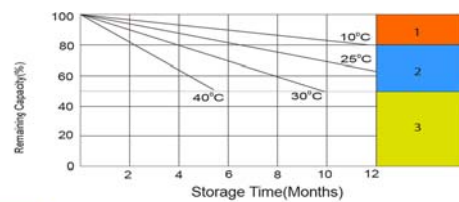
Cycle Life in Relation to Depth of Discharge



Temperature Effects in Relation to Battery Capacity



Self Discharge Characteristics



- 1 No supplementary charge required (Carry out supplementary charge before use if 100% capacity is required)
- 2 Supplementary charge required before use. Optional charging way as below:
1. Charged for above 3 days at limited current 0.25CA and constant voltage 2.25V/cell.
2. Charged for above 20 hours at limited current 0.25CA and constant voltage 2.45V/cell.
3. Charged for 8-10 hours at limited current 0.05CA.
- 3 Supplementary charge may often fail to recover the capacity. The battery should never be left standing till this is reached.

