

UP-SG400-2



Specification		
Nominal Voltage	2V	
Nominal Capacity (10HR)	400.0AH	
Dimension	Length	210±3mm (8.27 inches)
	Width	175±2mm (6.89 inches)
	Container Height	330±3mm (12.99 inches)
	Total Height (with Terminal)	339±3mm (13.35 inches)
Approx Weight	Approx 27.5kg (60.6lbs)	
Terminal	T11	
Container Material	ABS	
Rated Capacity	426.7AH/21.34A	(20hr, 1.80V/cell, 25°C/77°F)
	400.0AH/40.00A	(10hr, 1.75V/cell, 25°C/77°F)
	344.0AH/68.8A	(5hr, 1.75V/cell, 25°C/77°F)
	299.1AH/99.7A	(3hr, 1.75V/cell, 25°C/77°F)
	234.7AH/234.7A	(1hr, 1.67V/cell, 25°C/77°F)
Max. Discharge Current	2800A (5s)	
Internal Resistance	Approx 0.84mΩ	
Operating Temperature Range	Discharge: -20~55°C (-4~131°F)	
	Charge : 0~40°C (32~104°F)	
	Storage : -20~50°C (-4~122°F)	
Nominal Operating Temperature Range	25±3°C (77±5°F)	
Cycle Use	Initial Charging Current less than 80.0A.Voltage. 2.4V~2.5V at 25°C(77°F)Temp. Coefficient -5mV/°C	
Standby Use	No limit on Initial Charging Current Voltage. 2.25V~2.3V at 25°C(77°F)Temp. Coefficient -3mV/°C	
Capacity affected by Temperature	40°C (104°F) 103%	
	25°C (77°F) 100%	
	0°C (32°F) 86%	
Self Discharge	Batteries may be stored for up to 9 months at 25°C (77°F) and then a freshening charge is required.	

Constant Current Discharge (Amperes) at 25°C (77°F)														
F.V/Time	20min	30min	45min	1h	2h	3h	4h	5h	6h	7h	8h	9h	10h	20h
1.85V/cell	348.0	273.6	208.5	181.2	115.6	88.1	73.0	63.0	54.4	48.2	43.5	39.7	37.6	20.48
1.80V/cell	399.6	305.6	230.4	200.0	125.2	94.4	77.4	66.2	57.1	50.4	45.6	41.8	39.2	21.34
1.75V/cell	448.8	336.0	248.5	213.6	132.6	99.7	81.1	68.8	59.1	52.2	47.0	43.0	40.0	21.76
1.70V/cell	483.6	360.0	264.0	226.4	140.6	103.9	83.7	70.9	61.2	53.9	48.4	44.1	41.0	22.06
1.67V/cell	502.8	374.4	273.6	234.7	144.2	107.2	85.8	72.4	62.2	54.7	49.1	44.8	41.4	22.26
1.60V/cell	544.8	400.0	293.9	249.2	150.0	111.5	89.0	74.6	63.7	55.9	50.0	45.7	42.2	22.58

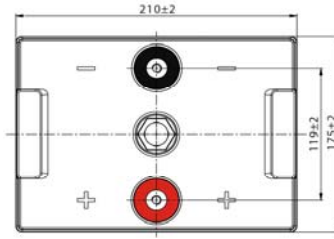
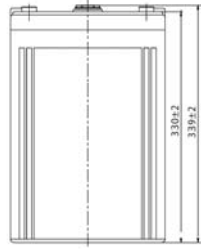
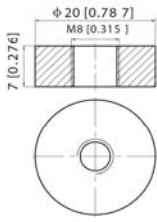
Constant Power Discharge (Watts) at 25°C (77°F)														
F.V/Time	20min	30min	45min	1h	2h	3h	4h	5h	6h	7h	8h	9h	10h	20h
1.85V/cell	660.9	523.1	401.2	350.1	224.1	171.3	142.5	123.5	107.0	94.9	85.8	78.5	74.3	40.6
1.80V/cell	748.9	578.8	439.1	384.4	241.5	182.9	150.5	129.3	111.9	99.0	89.7	82.4	77.5	42.2
1.75V/cell	831.6	629.3	469.5	408.4	255.1	192.8	157.2	133.7	115.4	102.3	92.4	84.8	78.9	43.0
1.70V/cell	886.4	669.6	496.8	431.3	269.2	200.2	161.8	137.4	119.3	105.5	95.0	86.9	80.7	43.5
1.67V/cell	911.1	687.0	510.3	443.6	274.7	205.7	165.3	139.9	120.9	106.7	96.1	87.9	81.6	43.9
1.60V/cell	976.3	729.2	545.1	468.5	284.4	212.9	171.0	143.8	123.5	108.7	97.7	89.6	83.0	44.5



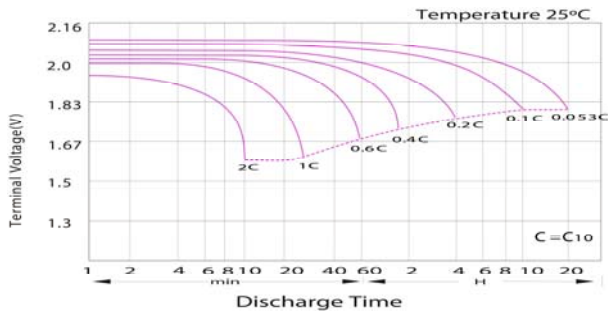
UP-SG400-2

Dimensions

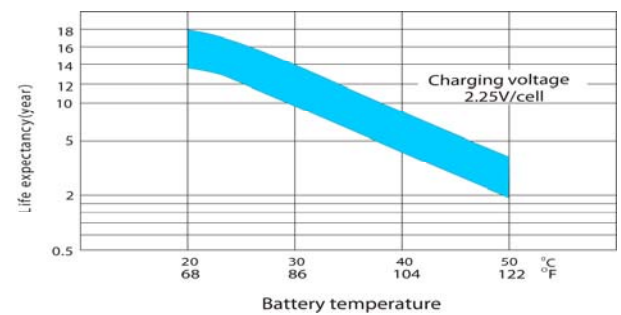
■ T11 Terminal
Unit: mm [inches]



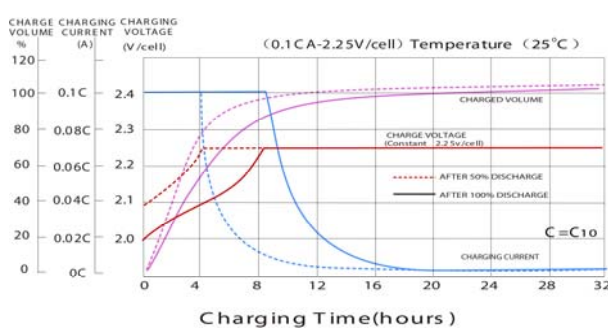
Discharge Characteristics



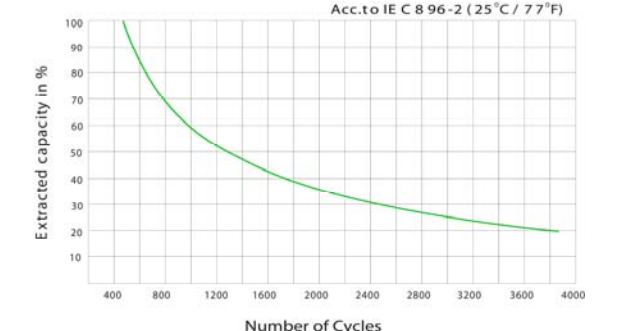
Effect of Temperature on Long Term Float Life



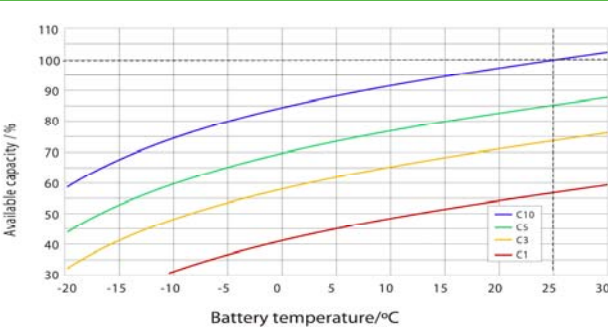
Float Charging Characteristics



Cycle Life in Relation to Depth of Discharge



Temperature Effects in Relation to Battery Capacity



General Relation of Capacity VS. Storage Time

