

## UP-SG3000-2



Specification		
Nominal Voltage	2V	
Nominal Capacity (10HR)	3000.0AH	
Dimension	Length	709±3mm (27.91 inches)
	Width	350±3mm (13.78 inches)
	Container Height	339±3mm (13.35 inches)
	Total Height (with Terminal)	349±3mm (13.74 inches)
	Approx Weight	Approx 189kg (416.75lbs)
Terminal	T11	
Container Material	ABS	
Rated Capacity	3200.0AH/160.0A	(20hr, 1.80V/cell, 25°C/77°F)
	3000.0AH/300.00A	(10hr, 1.75V/cell, 25°C/77°F)
	2580.0AH/516.0A	(5hr, 1.75V/cell, 25°C/77°F)
	2244.0AH/748.0A	(3hr, 1.75V/cell, 25°C/77°F)
	1760.0AH/1760.0A	(1hr, 1.67V/cell, 25°C/77°F)
Max. Discharge Current	21000A (5s)	
Internal Resistance	Approx 0.24mΩ	
Operating Temperature Range	Discharge: -20~55°C (-4~131°F)	
	Charge : 0~40°C (32~104°F)	
	Storage : -20~50°C (-4~122°F)	
Nominal Operating Temperature Range	25±3°C (77±5°F)	
Cycle Use	Initial Charging Current less than 600.0A.Voltage. 2.4V~2.5V at 25°C(77°F)Temp. Coefficient -5mV/°C	
Standby Use	No limit on Initial Charging Current Voltage. 2.25V~2.3V at 25°C(77°F)Temp. Coefficient -3mV/°C	
Capacity affected by Temperature	40°C (104°F) 103%	
	25°C (77°F) 100%	
	0°C (32°F) 86%	
Self Discharge	Batteries may be stored for up to 9 months at 25°C (77°F) and then a freshening charge is required.	

Constant Current Discharge (Amperes) at 25°C (77°F)														
F.V/Time	20min	30min	45min	1h	2h	3h	4h	5h	6h	7h	8h	9h	10h	20h
1.85V/cell	2610.0	2052.0	1564.0	1359.0	867.0	661.0	547.5	472.8	408.0	361.3	325.9	297.7	281.7	153.6
1.80V/cell	2997.0	2292.0	1728.0	1500.0	939.0	708.0	580.5	496.8	428.5	378.0	341.6	313.3	294.3	160.0
1.75V/cell	3366.0	2520.0	1864.0	1602.0	994.5	748.0	608.3	516.0	443.5	391.7	352.5	322.7	300.0	163.2
1.70V/cell	3627.0	2700.0	1980.0	1698.0	1054.5	779.0	627.8	531.6	459.0	404.6	363.0	331.0	307.2	165.5
1.67V/cell	3771.0	2808.0	2052.0	1760.0	1081.5	804.0	643.5	543.0	466.5	410.6	368.3	335.7	310.8	167.0
1.60V/cell	/	3000.0	2204.0	1869.0	1125.0	836.0	667.5	559.8	478.0	419.1	375.0	342.7	316.8	169.4

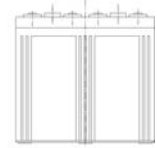
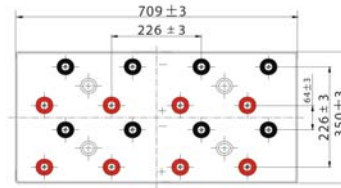
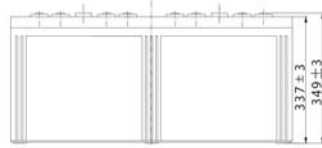
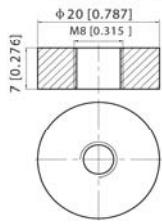
Constant Power Discharge (Watts) at 25°C (77°F)														
F.V/Time	20min	30min	45min	1h	2h	3h	4h	5h	6h	7h	8h	9h	10h	20h
1.85V/cell	4956.4	3923.4	3009.1	2625.6	1681.1	1285.0	1068.7	926.2	802.1	712.1	643.6	588.5	557.5	304.3
1.80V/cell	5616.4	4341.0	3293.6	2883.0	1811.3	1371.4	1128.5	969.8	839.4	742.4	672.7	617.9	581.2	316.5
1.75V/cell	6237.2	4720.0	3521.1	3063.0	1913.4	1445.9	1178.8	1002.6	865.7	767.4	692.7	635.7	591.9	322.5
1.70V/cell	6648.3	5022.0	3726.4	3234.7	2019.4	1501.1	1213.4	1030.8	894.6	791.3	712.2	651.4	605.5	326.6
1.67V/cell	6833.1	5152.7	3827.0	3326.1	2060.3	1542.9	1240.0	1049.1	906.4	800.6	720.7	658.9	611.7	329.2
1.60V/cell	/	5469.0	4088.4	3513.7	2133.0	1596.8	1282.3	1078.2	925.9	815.2	732.4	671.6	622.5	333.5



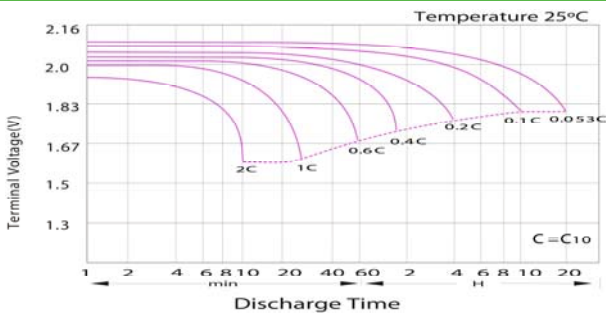
**UP-SG3000-2**

**Dimensions**

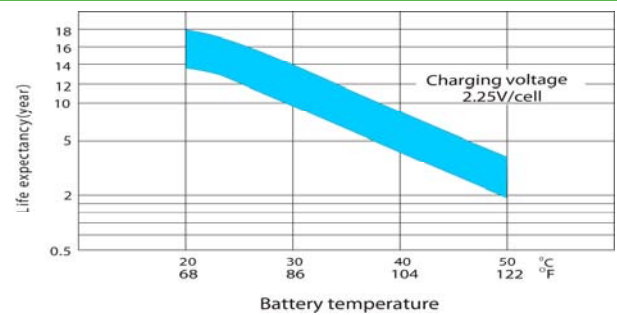
■ T11 Terminal  
Unit: mm [inches]



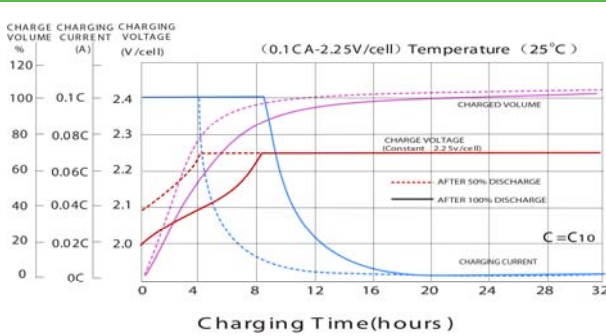
**Discharge Characteristics**



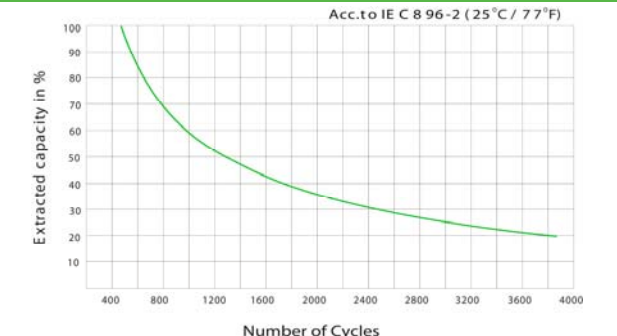
**Effect of Temperature on Long Term Float Life**



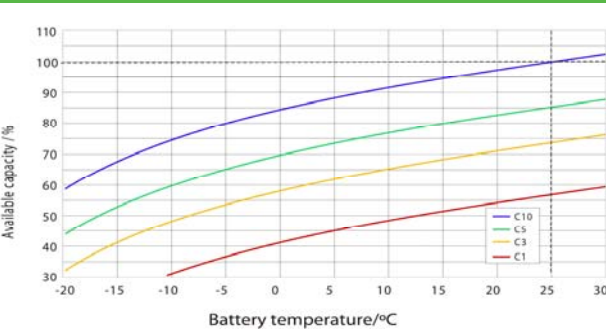
**Float Charging Characteristics**



**Cycle Life in Relation to Depth of Discharge**



**Temperature Effects in Relation to Battery Capacity**



**General Relation of Capacity VS. Storage Time**

