

## UP-G140-12



Specification		
Nominal Voltage	12V	
Nominal Capacity (20HR)	135.0AH	
Dimension	Length	485±3mm (19.09 inches)
	Width	170±2mm (6.69 inches)
	Container Height	240±3mm (9.45 inches)
	Total Height (with Terminal)	240±3mm (9.45 inches)
	Approx Weight	Approx 44.2 kg (97.5lbs)
Terminal	T11	
Container Material	ABS	
Rated Capacity	135.0 AH/6.75A	(20hr, 1.80V/cell, 25°C/77°F)
	125.6 AH/12.56A	(10hr, 1.75V/cell, 25°C/77°F)
	108.0 A H/21.6A	(5hr, 1.75V/cell, 25°C/77°F)
	97.8 AH/32.6A	(3hr, 1.75V/cell, 25°C/77°F)
	74.3 AH/4.3A	(1hr, 1.67V/cell, 25°C/77°F)
Max. Discharge Current	1260A (5s)	
Internal Resistance	Approx 4.2mΩ	
Operating Temperature Range	Discharge: -20~55°C (-4~131°F)	
	Change : 0~40°C (32~104°F)	
	Storage : -20~50°C (-4~122°F)	
Nominal Operating Temperature Range	25±3°C (77±5°F)	
Cycle Use	Initial Charging Current less than 27.0A.Voltage. 14.4V~15.0V at 25°C (77°F) Temp. Coefficient -30mV/°C	
Standby Use	No limit on Initial Charging Current Voltage. 13.5V~13.8V at 25°C (77°F) Temp. Coefficient -20mV/°C	
Capacity affected by Temperature	40°C (104°F) 103% 25°C (77°F) 100% 0°C (32°F) 86%	
Self Discharge	Batteries may be stored for up to 9 months at 25°C (77°F) and then a freshening charge is required.	

Constant Current Discharge (Amperes) at 25°C (77°F)														
F.V/Time	20min	30min	45min	1h	2h	3h	4h	5h	6h	7h	8h	9h	10h	20h
1.85V/cell	114.2	89.6	68.4	57.2	36.3	27.7	22.9	19.8	17.1	15.1	13.6	12.5	11.8	6.48
1.80V/cell	130.8	100.2	75.4	63.2	39.3	29.7	24.3	20.8	17.9	15.8	14.3	13.1	12.3	6.75
1.75V/cell	147.0	110.2	81.5	67.6	41.6	31.3	25.4	21.6	18.6	16.4	14.7	13.5	12.56	6.89
1.70V/cell	158.4	118.0	86.6	71.6	44.1	32.6	26.3	22.3	19.2	16.9	15.2	13.9	12.9	6.97
1.67V/cell	164.8	122.6	89.6	74.3	45.3	33.7	26.9	22.7	19.5	17.2	15.4	14.0	13.0	7.04
1.60V/cell	178.6	131.2	96.3	78.8	47.1	35.0	27.9	23.4	20.0	17.6	15.7	14.3	13.3	7.14

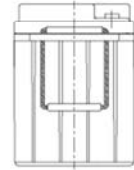
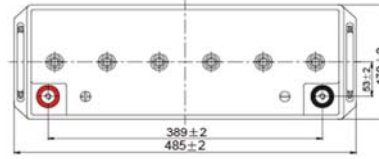
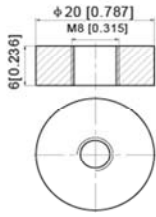
Constant Power Discharge (Watts/cell) at 25°C (77°F)														
F.V/Time	20min	30min	45min	1h	2h	3h	4h	5h	6h	7h	8h	9h	10h	20h
1.85V/cell	218.6	172.7	132.6	111.4	71.0	54.2	45.1	39.1	33.8	30.0	27.1	24.8	23.5	12.9
1.80V/cell	247.1	191.2	145.2	122.4	76.4	57.9	47.6	40.9	35.4	31.3	28.4	26.0	24.5	13.5
1.75V/cell	274.6	208.4	155.8	130.3	80.8	61.0	49.7	42.4	36.5	32.4	29.2	26.8	25.0	13.7
1.70V/cell	292.6	221.2	164.2	137.1	85.2	63.4	51.2	43.6	37.7	33.4	30.0	27.5	25.5	13.9
1.67V/cell	301.2	227.5	168.9	141.4	87.0	65.1	52.3	44.3	38.2	33.8	30.4	27.8	25.8	14.0
1.60V/cell	322.7	241.2	180.1	149.4	90.0	67.4	54.1	45.6	39.0	34.4	30.89	28.32	26.25	14.2



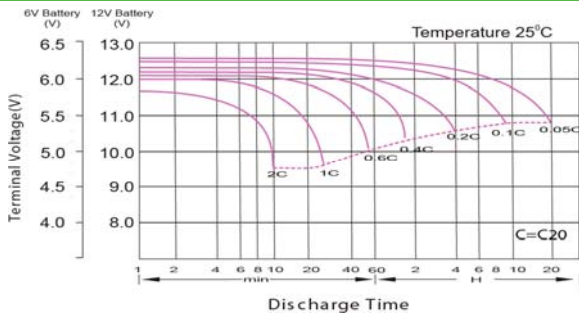
## UP-G140-12

### Dimensions

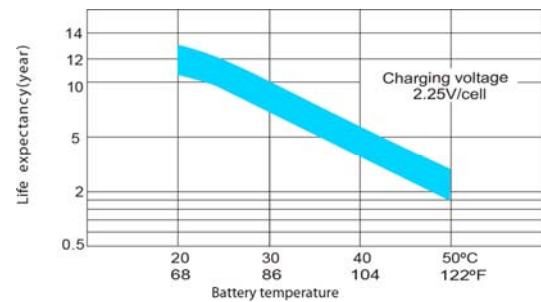
■ T11 Terminal  
Unit: mm [inches]



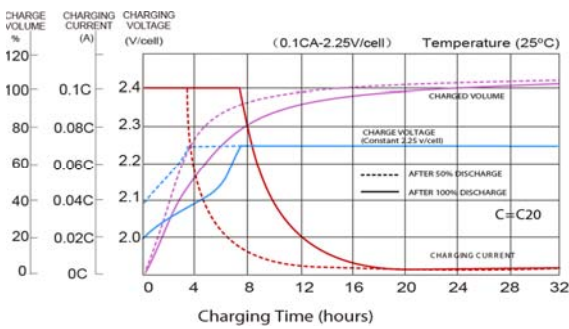
### Discharge Characteristics



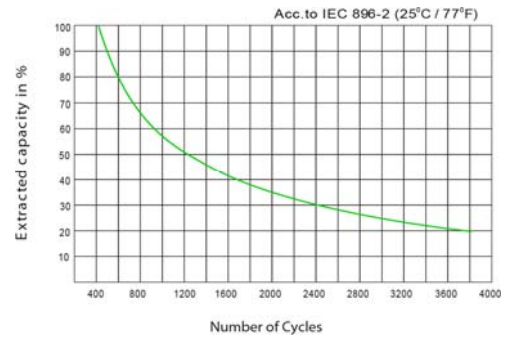
### Effect of Temperature on Long Term Float Life



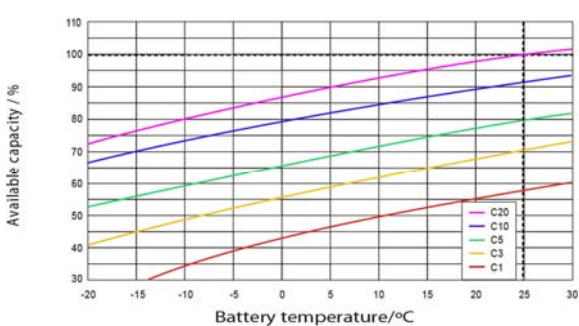
### Float Charging Characteristics



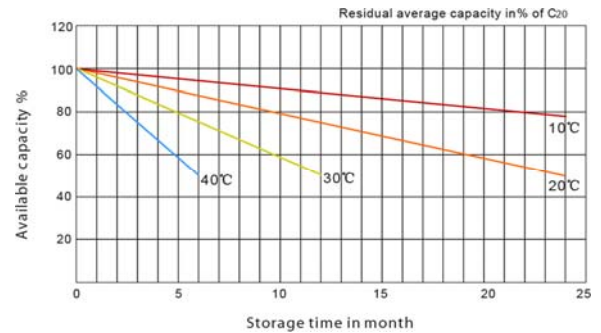
### Cycle Life in Relation to Depth of Discharge



### Temperature Effects in Relation to Battery Capacity



### General Relation of Capacity VS. Storage Time



MH26866

