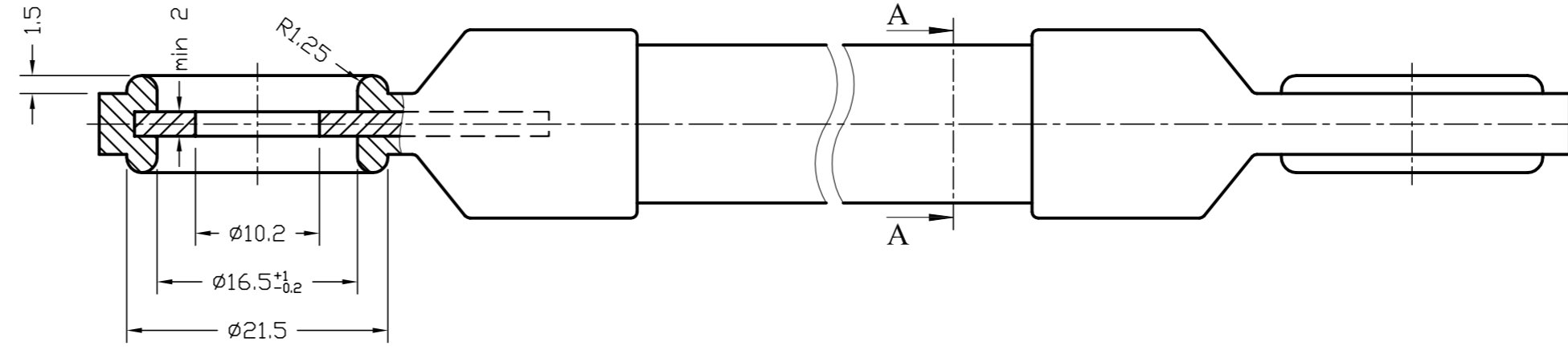
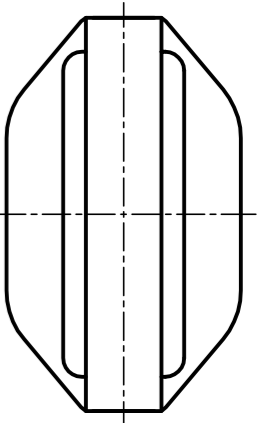
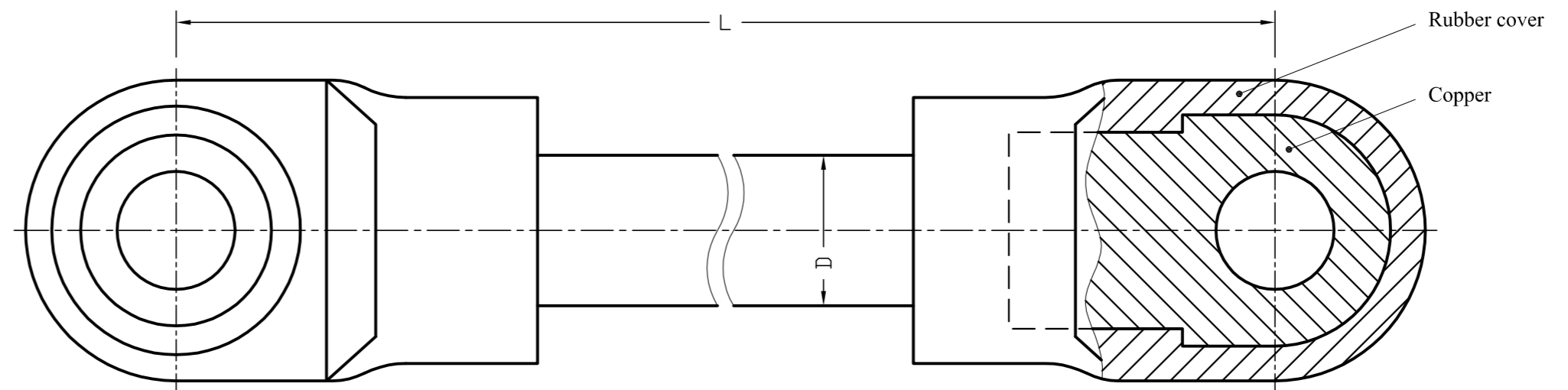
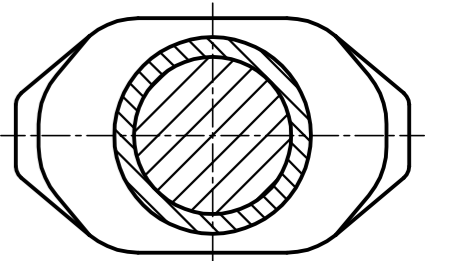


Connector table						
L	S	25 mm <sup>2</sup> (D=11.5)	35 mm <sup>2</sup> (D=12.5)	50 mm <sup>2</sup> (D=14.5)	70 mm <sup>2</sup> (D=16)	95 mm <sup>2</sup> (D=19.5)
75 <sup>+0.3</sup> mm		0271396	0271400	0271402	-	-
82 <sup>+0.3</sup> mm		0246726	0229785	0229786	0229787	0246841
95 <sup>+0.3</sup> mm		0246727	0229788	0229789	0229790	0246834
110 <sup>+0.3</sup> mm		0246728	0229791	0229792	0229793	0246835
130 <sup>+0.3</sup> mm		0271404	0271406	0241971	0267067	0271408
150 <sup>+0.3</sup> mm		0246729	0229794	0229795	0229796	0219923
160 <sup>+0.3</sup> mm		0246730	0229797	0229798	0229799	0246836
170 <sup>+0.3</sup> mm		0271410	0271412	0271414	0271417	0271419
175 <sup>+0.3</sup> mm		0246731	0229800	0229801	0229802	0246837
185 <sup>+0.3</sup> mm		-	-	-	0247330	-
190 <sup>+0.3</sup> mm		0271421	0271423	0271425	0271427	0271429
200 <sup>+0.3</sup> mm		-	-	-	-	0270171
210 <sup>+0.3</sup> mm		0271431	0271433	0271435	0271437	0271439
250 <sup>+0.3</sup> mm		0246732	0229803	0229804	0229805	0246838
300 <sup>+0.3</sup> mm		-	-	0247329	0247327	0219922
320 <sup>+0.3</sup> mm		-	0252970	0252972	0252974	-
350 <sup>+0.3</sup> mm		-	-	-	0245091	0267069
500 <sup>+0.3</sup> mm		0246733	0229806	0229807	0229808	0219920
550 <sup>+0.3</sup> mm		-	-	-	-	0267079
650 <sup>+0.3</sup> mm		-	-	-	-	0267081
1000 <sup>+1.5</sup> mm		0246734	0229809	0229810	0229811	0246839
1500 <sup>+1.5</sup> mm		-	-	0216208	0216206	0267065
2000 <sup>+1.5</sup> mm		-	-	-	0272057	-
500 <sup>+0.5</sup> mm with one cable end		0255534	0255536	0255538	0255540	0255542
750 <sup>+0.5</sup> mm with one cable end		0255426	0247320	0255428	0255430	0255432
1000 <sup>+1.5</sup> mm with one cable end		0247319	0255544	0255546	0255548	0255550
1500 <sup>+1.5</sup> mm with one cable end		0246735	0229812	0229813	0229814	0219921
2000 <sup>+1.5</sup> mm with one cable end		0255522	0255524	0255526	0255528	0255530



SECTION A-A



LEAD - ACID batteries dept.		Tolerance acc.		Scale: 2:1	
Industrial cells section		ISO 2768 m		Material: -	
		2009	Date	Name	Title:
		Drawn	29.10	omon	Connectors for traction & stand by batteries
		Appvd	29.10	skan	
05	Table added	20.07.12	mdor		Drawing Nr.
04	Codes added	22.11.10	scha	Code	
03	Codes changed	12.07.10	scha	See table	Repl. by:
02	Codes added	25.06.10	scha		
01	Codes added	17.03.10	omon		
Rev.	Changing	Date	Name	CAGE CODE G0941	

