

## UP-SG200-2



Specification		
Nominal Voltage	2V	
Nominal Capacity (10HR)	200.0AH	
Dimension	Length	170±2mm (6.69 inches)
	Width	110±2mm (4.33 inches)
	Container Height	328±3mm (12.91 inches)
	Total Height (with Terminal)	337±3mm (13.27 inches)
	Approx Weight	Approx 13.7kg (30.21lbs)
Terminal	T11	
Container Material	ABS	
Rated Capacity	213.3AH/106.65A	(20hr, 1.80V/cell, 25°C/77°F)
	200.0AH/20.00A	(10hr, 1.75V/cell, 25°C/77°F)
	172.0AH/34.4A	(5hr, 1.75V/cell, 25°C/77°F)
	149.7AH/49.9A	(3hr, 1.75V/cell, 25°C/77°F)
	117.3AH/117.3A	(1hr, 1.67V/cell, 25°C/77°F)
Max. Discharge Current	1400A (5s)	
Internal Resistance	Approx 1.2mΩ	
Operating Temperature Range	Discharge: -20~55°C (-4~131°F)	
	Charge : 0~40°C (32~104°F)	
	Storage : -20~50°C (-4~122°F)	
Nominal Operating Temperature Range	25±3°C (77±5°F)	
Cycle Use	Initial Charging Current less than 40.0A.Voltage. 2.4V~2.5V at 25°C(77°F)Temp. Coefficient -5mV/°C	
Standby Use	No limit on Initial Charging Current Voltage. 2.25V~2.3V at 25°C(77°F)Temp. Coefficient -3mV/°C	
Capacity affected by Temperature	40°C (104°F) 103%	
	25°C (77°F) 100%	
	0°C (32°F) 86%	
Self Discharge	Batteries may be stored for up to 9 months at 25°C (77°F) and then a freshening charge is required.	

Constant Current Discharge (Amperes) at 25°C (77°F)														
F.V/Time	20min	30min	45min	1h	2h	3h	4h	5h	6h	7h	8h	9h	10h	20h
1.85V/cell	174.0	136.8	104.3	90.6	57.8	44.1	36.5	31.5	27.2	24.1	21.7	19.8	18.8	10.24
1.80V/cell	199.8	152.8	115.2	100.0	62.6	47.2	38.7	33.1	28.6	25.2	22.8	20.9	19.6	10.67
1.75V/cell	224.4	168.0	124.3	106.8	66.3	49.9	40.6	34.4	29.6	26.1	23.5	21.5	20.0	10.88
1.70V/cell	241.8	180.0	132.0	113.2	70.3	51.9	41.9	35.4	30.6	27.0	24.2	22.1	20.5	11.03
1.67V/cell	251.4	187.2	136.8	117.3	72.1	53.6	42.9	36.2	31.1	27.4	24.6	22.4	20.7	11.13
1.60V/cell	272.4	200.0	146.9	124.6	75.0	55.7	44.5	37.3	31.9	27.9	25.0	22.8	21.1	11.29

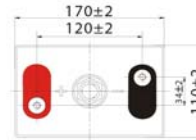
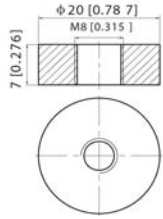
Constant Power Discharge (Watts) at 25°C (77°F)														
F.V/Time	20min	30min	45min	1h	2h	3h	4h	5h	6h	7h	8h	9h	10h	20h
1.85V/cell	330.4	261.6	200.6	175.0	112.1	85.7	71.2	61.7	53.5	47.5	42.9	39.2	37.2	20.3
1.80V/cell	374.4	289.4	219.6	192.2	120.8	91.4	75.2	64.7	56.0	49.5	44.8	41.2	38.7	21.1
1.75V/cell	415.8	314.7	234.7	204.2	127.6	96.4	78.6	66.8	57.7	51.2	46.2	42.4	39.5	21.5
1.70V/cell	443.2	334.8	248.4	215.6	134.6	100.1	80.9	68.7	59.6	52.8	47.5	43.4	40.4	21.8
1.67V/cell	455.5	343.5	255.1	221.7	137.4	102.9	82.7	69.9	60.4	53.4	48.0	43.9	40.8	21.9
1.60V/cell	488.1	364.6	272.6	234.2	142.2	106.5	85.5	71.9	61.7	54.3	48.8	44.8	41.5	22.2



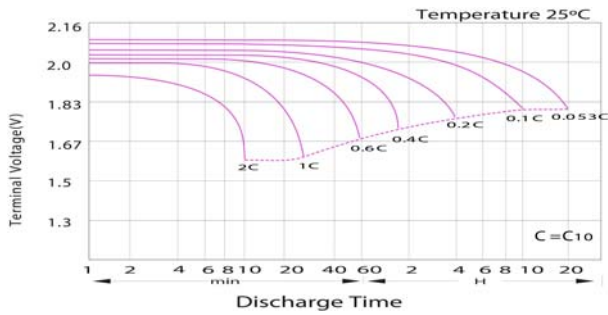
**UP-SG200-2**

**Dimensions**

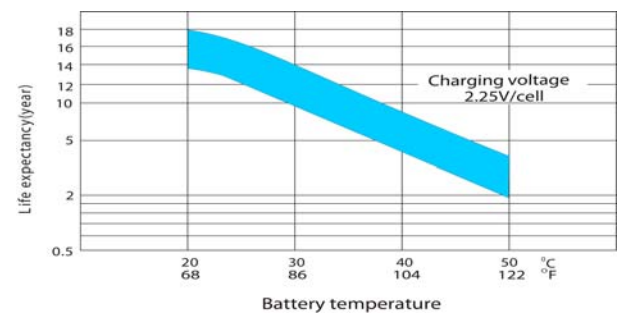
■ T11 Terminal  
Unit: mm [inches]



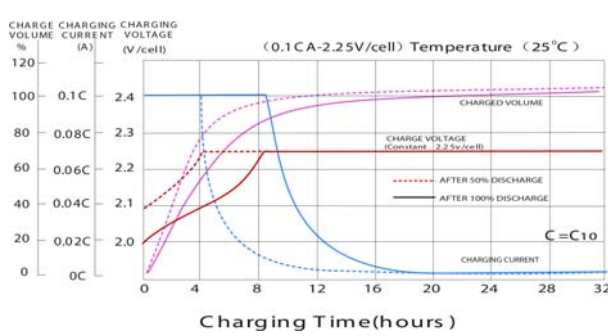
**Discharge Characteristics**



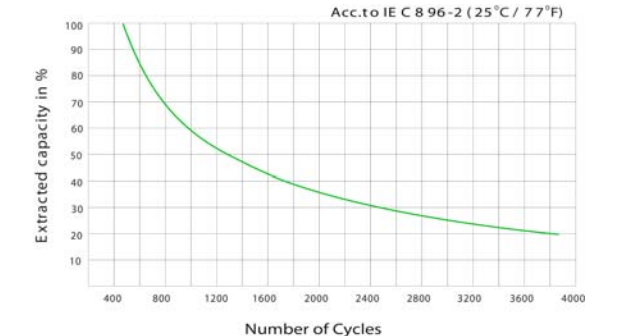
**Effect of Temperature on Long Term Float Life**



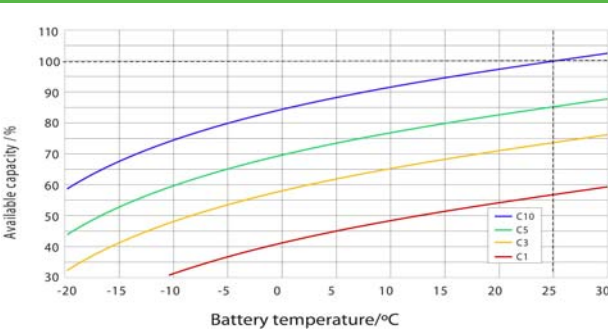
**Float Charging Characteristics**



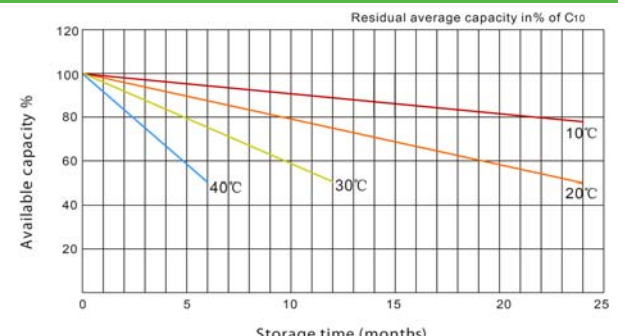
**Cycle Life in Relation to Depth of Discharge**



**Temperature Effects in Relation to Battery Capacity**



**General Relation of Capacity VS. Storage Time**



Poligono industrial La Dehesa  
C/ Dehesa Vieja, n°2 Nave 16  
28052 Madrid (Spain)  
Tel. (+34) 918 021 649  
Fax. (+34) 917 750 542  
info@masterbattery.es

